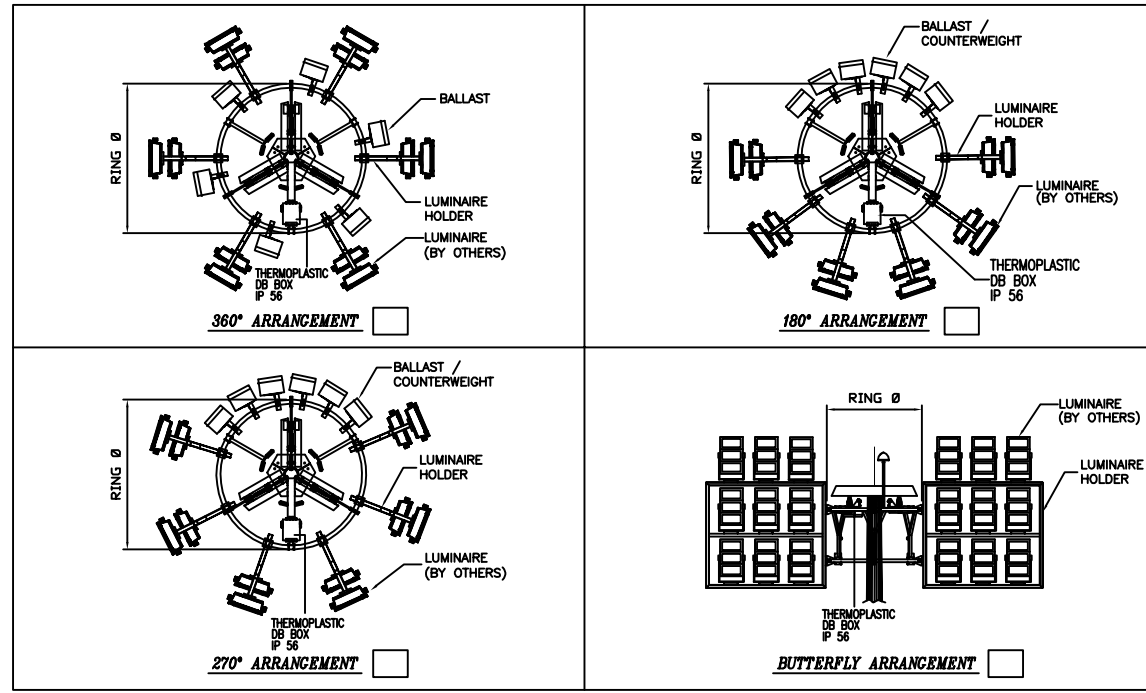


1. TYPE OF ARRANGEMENT. PLEASE TICK



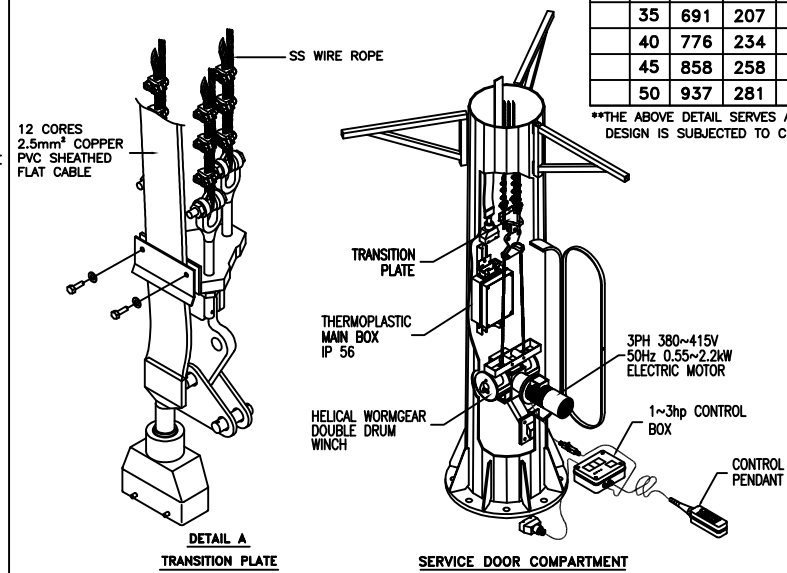
2. PLEASE FILL-IN

NO. OF LUMINAIRE	___ NOS.
LUMINAIRE WEIGHT	___ kg/unit
NO. OF FLAT CABLE	1 / 2 / 3 NOS.

3. STANDARD MAST DETAIL. PLEASE TICK

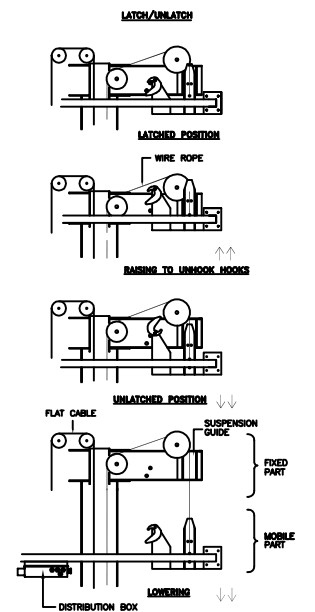
TICK	Lm	BODY DETAIL				FLANGE DETAIL				HOLDING BOLT	
		BOT AF	TOP AF	SECT. NOS	RING Ø(m)	OD	PCD	HOLE Ø	HOLE NOS	ØD	E
<input checked="" type="checkbox"/>	15	504	288	2	1.8	750	650	39	8	Ø33	1200
	20	504	222	3	1.8	750	650	39	8	Ø33	1200
	25	600	254	4	1.8	900	780	39	12	Ø33	1200
	30	600	180	4	1.8	900	780	39	12	Ø33	1200
	35	691	207	5	1.8	900	780	39	16	Ø33	1200
	40	776	234	6	2.0	1000	880	39	20	Ø39	1500
	45	858	258	7	2.0	1120	1000	47	20	Ø39	1500
	50	937	281	8	2.0	1210	1100	60	20	Ø52	1950

**THE ABOVE DETAIL SERVES AS GENERAL SPECIFICATION OF THE HIGH MAST. THE FINAL HIGH MAST DESIGN IS SUBJECT TO CHANGE ACCORDING TO NOS. OF LUMINAIRE AND ITS SPECIFICATION.



SPECIFICATION

- HIGH MAST DIMENSION
 - 1.1 MOUNTING HEIGHT = 15~50m
 - 1.2 CROSS SECTION SHAPE (NO. OF SIDES) = 20
 - 1.3 MAX. TOTAL NO. OF SECTIONS = 8
 - 1.4 MAX. SECTION LENGTH = 8m
 - 1.5 SERVICE DOOR DIMENSIONS
 - 1.5.1 LENGTH = 1200mm
 - 1.5.2 WIDTH = 300mm
 - 1.5.3 DOOR BOTTOM FROM GROUND LEVEL = 600mm
 - 1.6 DOOR OPENING TO BE REINFORCED HEAVILY TO PREVENT BUCKLING = YES
 - 1.7 ANTI-VANDALISM DOOR LOCK = GALVAPOLE DESIGN
- DESIGN CONDITIONS
 - 2.1 MAX. PROJECTED LUMINAIRE SAIL AREA = UP TO 2.5m²
 - 2.2 BASIC WIND SPEED = 35 m/s AT 10m HEIGHT
- CONFIRMING STANDARDS
 - 3.1 MAST DESIGN = ILE TR7
 - 3.2 MAST CONSTRUCTION = AASHTO 1994
 - 3.3 MATERIAL = BS EN 10025 S355JR, BS EN 10025 S275JR
 - 3.4 WELDING (ELECTRIC ARC WELDING) = BS EN 1011-1
 - 3.4 GALVANIZING = ASTM A123
- LATCHING SYSTEM
 - 4.1 THE LATCHING MECHANISM USES SELF LOCKING SYSTEM FULLY OPERATIONAL BY LAW OF GRAVITY AND DOES NOT CONTAIN MECHANICAL COMPONENTS SUCH AS SPRINGS, LEVER OR ETC.
 - 4.2 IT IS UNDER THE CONTRACTOR SCOPE TO ENSURE THAT THE LUMINAIRE CARRIAGE RING ARE WELL BALANCED AFTER LUMINAIRE INSTALLATION.



DRAWING TITLE: **HIGH MAST**

MANUFACTURER: **GALVAPOLE INDUSTRIES SDN. BHD.**
 NO.9, JALAN KECAP1 33/2, ELITE INDUSTRIAL ESTATE
 JLN BUKIT KEMUNING
 40250 SHAH ALAM, SELANGOR, MALAYSIA
 TEL: 603-5121300 FAX: 603-5121225
 E-mail: sales@galvapole.com
 Website: www.galvapole.com

DRAWN BY: _____ DATE: _____

SCALE: N:T:S _____ CHKD. BY: _____

FILE NAME: HM STD _____ REVISION: _____

00