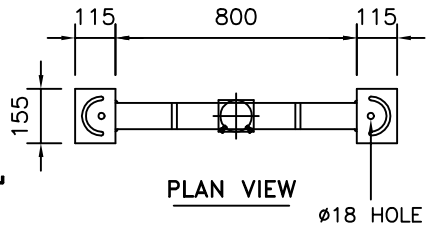


6M NOMINAL MOUNTING HEIGHT

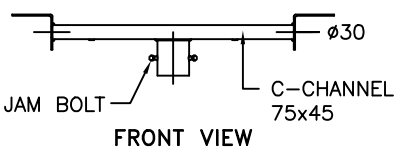
1300

HEADFRAME FOR 2 FLOODLIGHTS

FLOODLIGHTS (BY OTHERS)



PLAN VIEW



FRONT VIEW HEADFRAME DETAIL

OCTAGONAL POLE

DETACHABLE CLIMBING RUNGS

DOUBLE SLOT HINGED

SERVICE DOOR

GL.

CABLE ENTRY SLOT 55W x 150H

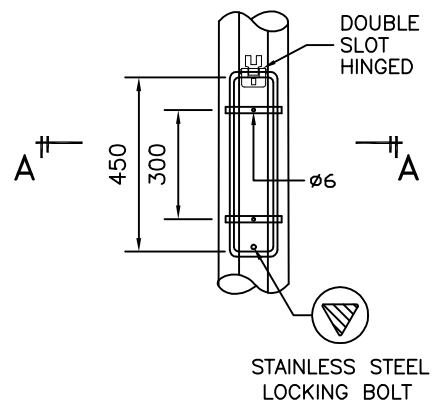
BASE PLATE c/w HOOK BOLT SEE DETAIL

BASE BOARD NON-HYGROSCOPIC MATERIAL (BY BUYER)

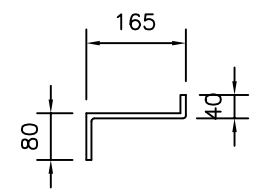
EARTHING LUG

DOOR COVER

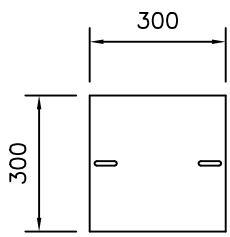
SECTION A-A



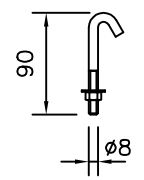
SERVICE DOOR DETAIL



CLIMBING RUNGS DETAIL



BASE PLATE



HOOK BOLT

TECHNICAL SPECIFICATIONS

- THE COLUMNS ARE DESIGNED TO WITHSTAND WIND SPEED OF 35M PER SECOND, TOPOGRAPHY, GROUND ROUGHNESS & STATISTICAL FACTOR OF 1.0.
- COLUMNS ARE MANUFACTURED IN COMPLIANCE TO BRITISH STANDARD BS EN 40.
- MATERIALS USED FOR LIGHTING COLUMNS ARE COMPLIANCE TO BS EN 10025 S275 /JIS G3101 SS400.
- LIGHTING COLUMNS ARE LONGITUDINALLY SEAM WELDED CONFORM TO BS 5135 BY AUTOMATIC CONTINUOUS METAL INERT GAS (MIG) PROCESS.
- COLUMNS ARE ANTI-CORRODED BY HOT-DIP GALVANIZED, COMPLIANCE TO GALVANIZING STANDARD BS EN ISO 1461
- SERVICE DOOR DIMENSIONS ARE GIVEN AS A GUIDE ONLY. THE ENGINEER MUST SATISFY HIMSELF THAT DIMENSIONS GIVEN ARE ADEQUATE FOR THE INSTALLATION OF THE REQUIRED CONTROL GEAR.
- ALL DIMENSIONS ARE IN (mm), UNLESS OTHERWISE SPECIFIED.

GALVAPOLE INDUSTRIES SDN. BHD.



9, JALAN KECAPI 33/2, ELITE INDUSTRIAL ESTATE JALAN BUKIT KEMUNING, 40350 SHAH ALAM, SELANGOR MALAYSIA
 Tel : 603-51213300
 Fax : 603-51212828
 Website : www.galvapole.com
 Email : sales@galvapole.com

CLIENT : -

PROJECT : -

DATE : 17-03-2010

DRAWN BY : A.D

DRAWING TITLE :

**6M FLOODLIGHT COLUMN
 HF-2 CLIMBING RUNG TYPE PT**

DRAW NO : 6M/FLC CR/HF-2/PT/R0

FILE NAME : FLC STD ISO

CHECKED BY : CCC

SCALE : N.T.S

APPROVED BY : CCC

A4 SIZE

THIS DRAWING IS THE PROPERTY OF GALVAPOLE INDUSTRIES SDN. BHD. AND MUST NOT BE REPRODUCED WITHOUT THEIR PRIOR CONSENT IN WRITING.