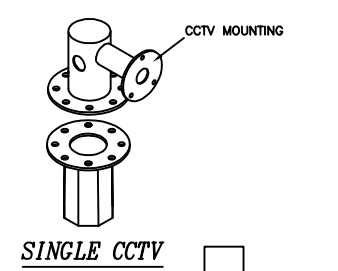
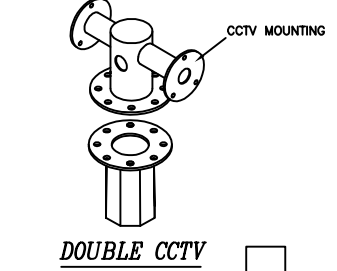


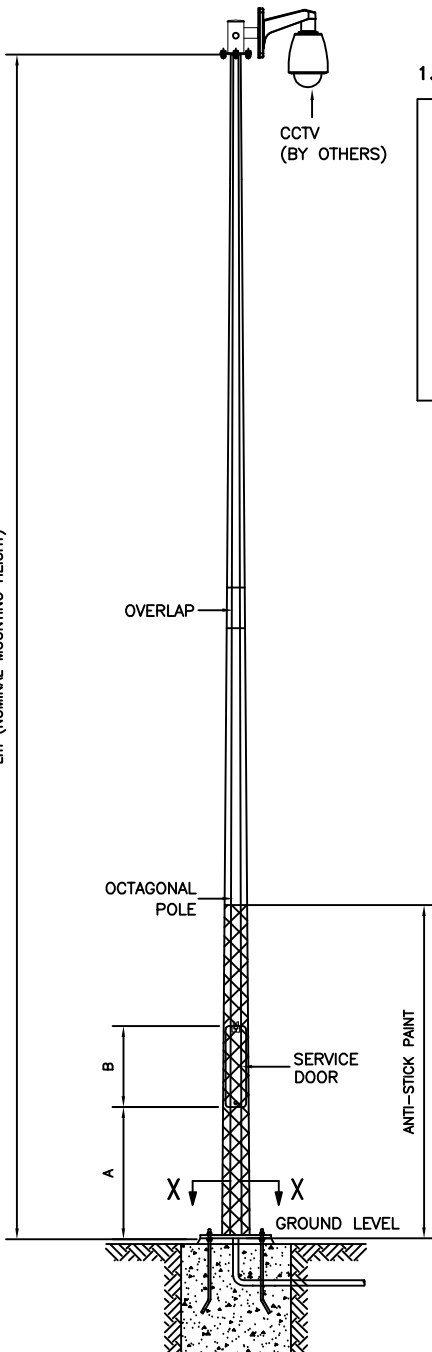
TECHNICAL SPECIFICATIONS

- THE COLUMNS ARE DESIGNED TO WITHSTAND MAXIMUM WIND SPEED OF 35 m/s (3-SEC GUST), TOPOGRAPHY, GROUND ROUGHNESS & STATISTICAL FACTOR OF 1.0.
- COLUMNS ARE MANUFACTURED IN COMPLIANCE TO BRITISH STANDARD BS EN 40.
- MATERIALS USED FOR COLUMNS ARE COMPLIANCE TO BS EN 10025 S275JR.
- COLUMNS ARE LONGITUDINALLY SEAM WELDED CONFORM TO BS 1011-1 BY AUTOMATIC CONTINUOUS METAL INERT GAS (MIG) PROCESS.
- COLUMNS ARE ANTI-CORRODED BY HOT-DIP GALVANIZED, COMPLIANCE TO GALVANIZING STANDARD BS EN ISO 1461
- ALL DIMENSIONS ARE IN (mm), UNLESS OTHERWISE SPECIFIED.
- ALL MATERIAL TOLERANCES ARE ACCORDANCE TO: BS EN 10029 (STEEL PLATE) BS EN 10255 (STEEL TUBE / HOLLOW SQUARE) BS EN 10056 (STEEL ANGLE)
- UNLESS OTHERWISE SPECIFIED, ALL DIMENSION WITHIN THIS DRAWING ARE AS PER GALVAPOLE STANDARD SPECIFICATION AND SUBJECTED TO TOLERANCE AS PER BS EN 40-2.

1. PLEASE TICK

| | |
|---|--|
|  <p style="text-align: center;">SINGLE CCTV <input type="checkbox"/></p> |  <p style="text-align: center;">DOUBLE CCTV <input type="checkbox"/></p> |
|---|--|

Lm (NOMINAL MOUNTING HEIGHT)



PLEASE TICK

2. SERVICE DOOR TYPE

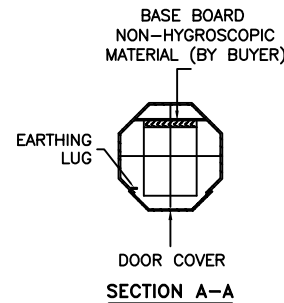
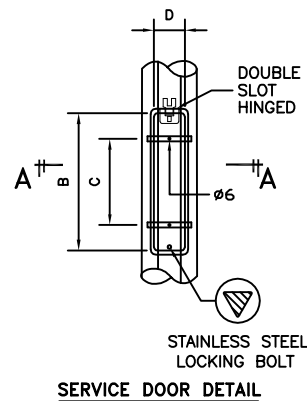
| | |
|--------------------------|--|
| STEEL | |
| FIBER WITH _____ WORDING | |

3. SPECIAL DOOR HEIGHT "A"

| | |
|------------------------|--|
| 2.0M FROM GROUND LEVEL | |
| 1.8M FROM GROUND LEVEL | |

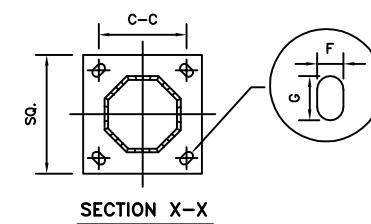
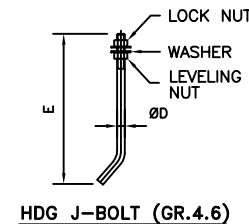
4. ANTI-STICK PAINT

| | |
|---------------------------|--|
| _____ M FROM GROUND LEVEL | |
|---------------------------|--|



6. COLUMN DETAIL.PLEASE TICK

| TICK | Lm | STANDARD SERVICE DOOR DETAIL | | | | FLANGE DETAIL | | | | HOLDING BOLT | | OVERLAP |
|-------------------------------------|----|------------------------------|-----|-----|-----|---------------|-----|-----------|----|--------------|-----|---------|
| | | A | B | C | D | SQ | C-C | ELONGATED | | ØD | E | |
| | | | | | | | | F | G | | | |
| <input checked="" type="checkbox"/> | 3 | 305 | 305 | 150 | 72 | 300 | 220 | 25 | 45 | Ø20 | 450 | - |
| | 4 | 305 | 305 | 150 | 100 | 300 | 220 | 25 | 45 | Ø20 | 450 | - |
| | 5 | 305 | 305 | 150 | 110 | 300 | 220 | 25 | 45 | Ø20 | 450 | - |
| | 6 | 305 | 450 | 300 | 110 | 300 | 220 | 25 | 45 | Ø20 | 450 | 250 |
| | 7 | 610 | 450 | 300 | 110 | 300 | 220 | 30 | 50 | Ø24 | 570 | 250 |
| | 8 | 610 | 450 | 300 | 110 | 335 | 260 | 30 | 50 | Ø24 | 570 | 250 |
| | 10 | 610 | 450 | 300 | 110 | 400 | 300 | 30 | 50 | Ø24 | 570 | 250 |
| | 12 | 610 | 450 | 300 | 110 | 400 | 300 | 30 | 50 | Ø24 | 570 | 250 |



GALVAPOLE INDUSTRIES SDN. BHD.
 9, JALAN KECAPU 33/2,
 ELITE INDUSTRIAL ESTATE
 JALAN BUKIT KEMUNING,
 40350 SHAH ALAM, SELANGOR
 MALAYSIA
 Tel : +603-51213300
 Fax : +603-51212828
 Website : www.galvapole.com
 Email : sales@galvapole.com

| | | | |
|--|------------|----------------------------|---------------|
| CLIENT : - | | CAD FILE : CCTV FM STD ISO | |
| PROJECT : - | | CHECK BY : | |
| DATE : | DRAWN BY : | APPROVE BY : | |
| DRAWING TITLE : | | SCALE : N.T.S | REVISION : 00 |
| CCTV COLUMN FLANGE MOUNTED | | | |
| THIS DRAWING BELONGS TO THE PROPERTY OF GALVAPOLE INDUSTRIES SDN. BHD. IT MUST NOT BE REPRODUCED WITHOUT OWNER'S PRIOR CONSENT IN WRITING. | | | |